

WEST BROADWAY

RUE SHERBROOKE

# CONCORDIA'S PUBLIC ART COLLECTION

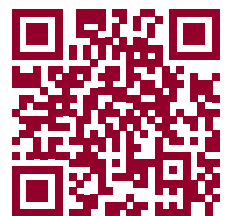
LOYOLA CAMPUS

Today the collection features over 40 artists and is presented across Concordia's two campuses on building facades, city sidewalks, tunnels, and many atria. The eclectic collection is a compilation of donations, commissions, and works created through the Politique d'intégration des arts à l'architecture program (also known as the 1% program).

 INDOORS

 OUTDOORS

[concordia.ca/arts/public-art](http://concordia.ca/arts/public-art)





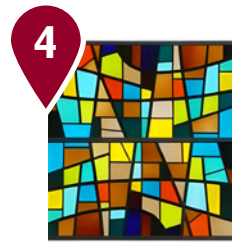
**Adad Hannah**  
*Leap*  
PC FAÇADE



**Marie France Brière**  
*Figures en lisière*  
GE BUILDING



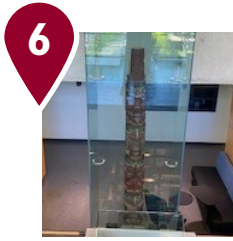
**Eric Wesselow**  
*Eight panels of multicoloured glass*  
CJ ENTRANCE



**Stained Glass for Jesuit Chapel, Loyola College**  
CJ ATRIUM



**Jordi Bonet**  
*The Builder*  
SP CORRIDOR



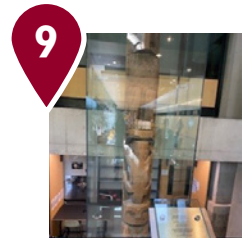
**Coast Salish House Post**  
Tsawwassen Reserve,  
Vancouver Island  
SP CORRIDOR



**Ancestor Figure**  
Sepik River, New Guinea  
SP CORRIDOR



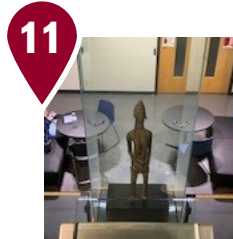
**Ancestor Head**  
Sepik River, New Guinea  
SP CORRIDOR



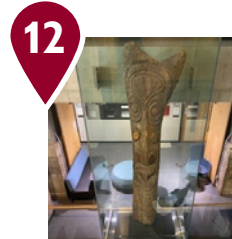
**Totem Pole**  
Indigenous West Coast,  
North America  
SP CORRIDOR



**Figure in Form of Stool**  
Sepik River, New Guinea  
SP CORRIDOR



**Mother and Child**  
Bambara, Mali  
SP CORRIDOR



**House Post**  
Lower Sepik River, New Guinea  
SP CORRIDOR



**Marc-Antoine Côté**  
*Montre-moi par où on commence / Dis-le-moi au creux de l'oreille*  
HU BUILDING



**Walter Führer**  
*Transcendence*  
HB QUAD



**Dave McGary**  
*The Emergence of the Chief*  
AD QUAD



**François Houdé**  
*Four Horsemen*  
VL STAIRCASE

# CONCORDIA

[concordia.ca/arts/public-art](http://concordia.ca/arts/public-art)

