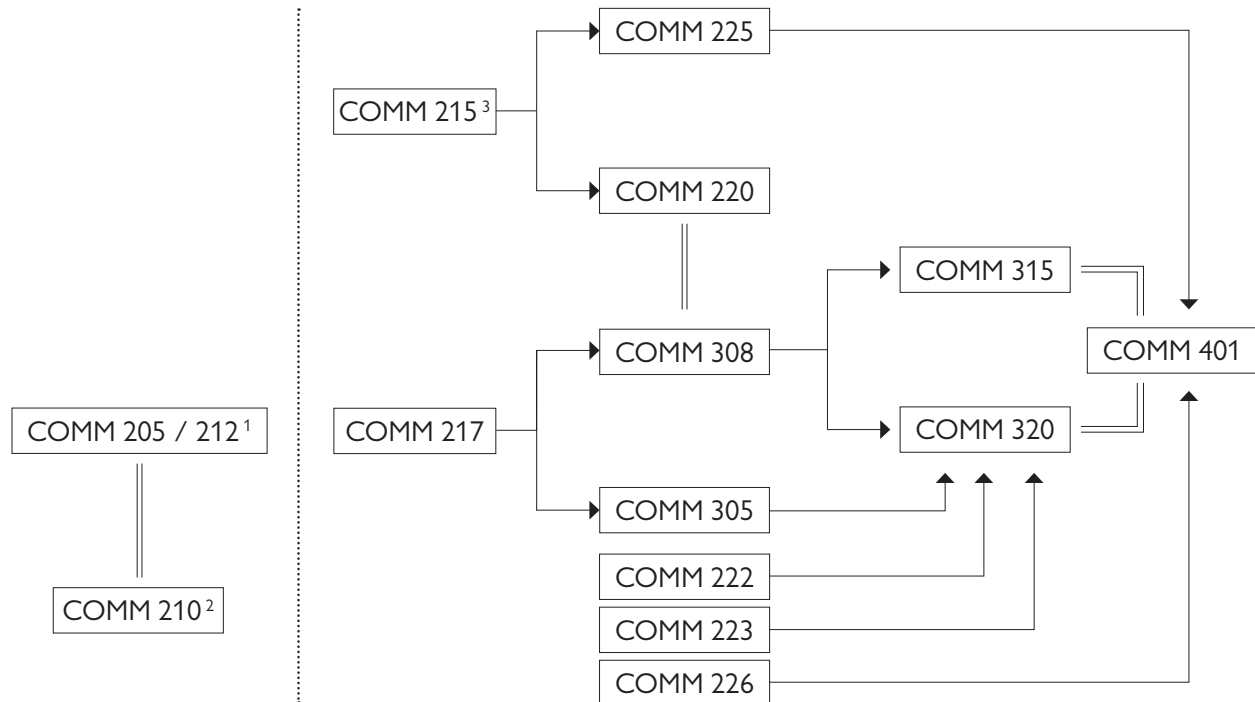


Structure of the Core Courses

All business students, regardless of major, are required to complete **the same core of 42 credits**. These courses serve as an introduction to the essential areas of business and provide students with a strong business foundation. The flowchart shows how the various core courses are interrelated so you can complete them in the proper sequence.



Notes:

1. The course COMM 212 has been renumbered COMM 205. It requires BTM 200 previously or concurrently.
2. This course requires ECON 201 (or ECON 203) previously or concurrently.
3. This course requires MATH 208 and MATH 209, or equivalent courses, as well as BTM 200, previously or concurrently.
4. A prerequisite (→) refers to a course that should be completed before the course that appears at the tip of the arrow. For example, COMM 215 must be completed before COMM 220.
5. A prerequisite or co-requisite refers to a course that can be completed in the same term as the course linked by the double line (==). For example, COMM 220 and COMM 308 can be completed in the same term.
6. The courses COMM 205 (or 212) and COMM 210 are essential for the business program. Hence, students cannot move forward without completing these two courses before the other core courses. The connections between COMM 205 (or 212), COMM 210 and other core courses are omitted for simplicity.
7. **Students are responsible for following the correct sequence of core courses. Students who fail a course must repeat it before taking the next course.**