



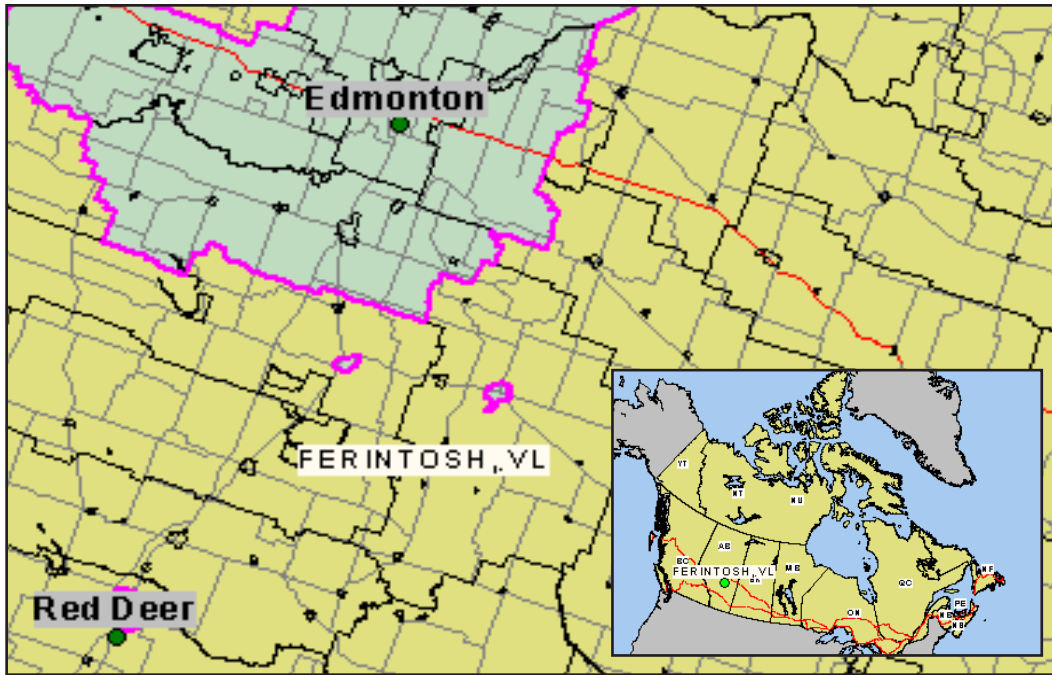
Site 26: Ferintosh, Alberta

Located 125 km Southeast of Edmonton and 20 minutes Southwest of Camrose, the community of Ferintosh is home to 150 residents. The population is mainly retirees, but the number of younger households is growing. Strong regional economic growth is enabling people to commute and enjoy the amenities of Ferintosh as home.

Ferintosh experienced many years ago what some places are coping with today. In 1975, the community lost its school and in 1976, two of the three grain elevators closed. The third was removed in 1996. These losses have been taken in stride, but not without reinforcing the trend to shop in Camrose. Several effective volunteer associations help keep the community together.

Currently, two public utility co-operatives operate from Ferintosh and a fibre optics terminal has positioned the village well for further development. The water supply, sewer system and regional landfill are up to date and the village maintains a financial reserve under prudent management.

Nestled among central Alberta's forested hills on the shore of Little Beaver Lake, Ferintosh has the potential for recreation and leisure activities. Two bed and breakfast businesses have opened and the hotel has been renovated. Citizens have been polled on their priorities for development. A feeling of hope and pride in the lifestyle of Ferintosh has replaced the devitalization of previous years.



Maps courtesy of Statistics Canada, Geography Division, 2000

<i>Characteristics in 1996</i>	<i>Ferintosh</i>	<i>Alberta</i>	<i>Canada</i>
Population	130	2 696 826	28 846 761
1991 to 1996 population change (%)	13.0	5.9	5.7
% of population ages 15 and over	84.6	77.2	79.5
Unemployment rate	0	7.2	10.1
Participation rate	66.7	72.4	65.5
% Primary industry	33.3	11.6	5.6
% Secondary industry	0	15.2	20
% Tertiary industry	66.7	73.2	74.4
Average number of persons in married or common-law families	3.0	3.2	3.1
Average number of persons in lone-parent families	0	2.6	2.6

Source: Statistics Canada

The New Rural Economy Project
 Concordia University
 Dept. of Sociology & Anthropology
 1455 de Maisonneuve, West
 Montréal, (Québec) H3G 1M8
 Telephone: (514) 848-2139
 E-mail: nre@vax2.concordia.ca
 Internet: nre.concordia.ca

The New Rural Economy project is a research and education initiative of the Canadian Rural Revitalization Foundation. The Foundation is a non-profit association dedicated to improving the quality of life for all rural Canadians.

